



**SCHWING**

# S 36 X *Razor*

Truck-mounted concrete pump

## NEW:

- > RZ-Folding
- > 5-section boom
- > low unfolding height: 22' - 4"



Vertical reach		115' - 3"
Concrete output	max.	178 cu <sup>3</sup> yr/h
Pressure on concrete	max.	1102 psi

**MADE IN GERMANY**  
by SCHWING-Stetter 

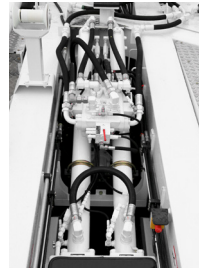
**THE STANDARD YOU SET.**

# The S 36 X RaZor from SCHWING

## Features and benefits

### Pump kit

The SCHWING control block provides full hydraulic switching of the ROCK and differential cylinders. This ensures reliability in difficult operating conditions. Advantage: All hydraulic shifting makes maintenance and troubleshooting simple.



### Concrete valve

Thanks to its design, the ROCK valve suffers significantly less wear and tear than other concrete valves. It is also quick to clean and demonstrably easier to maintain. The advantages of the S 36 X RaZor: shorter servicing times, higher machine uptime, and lower maintenance costs.



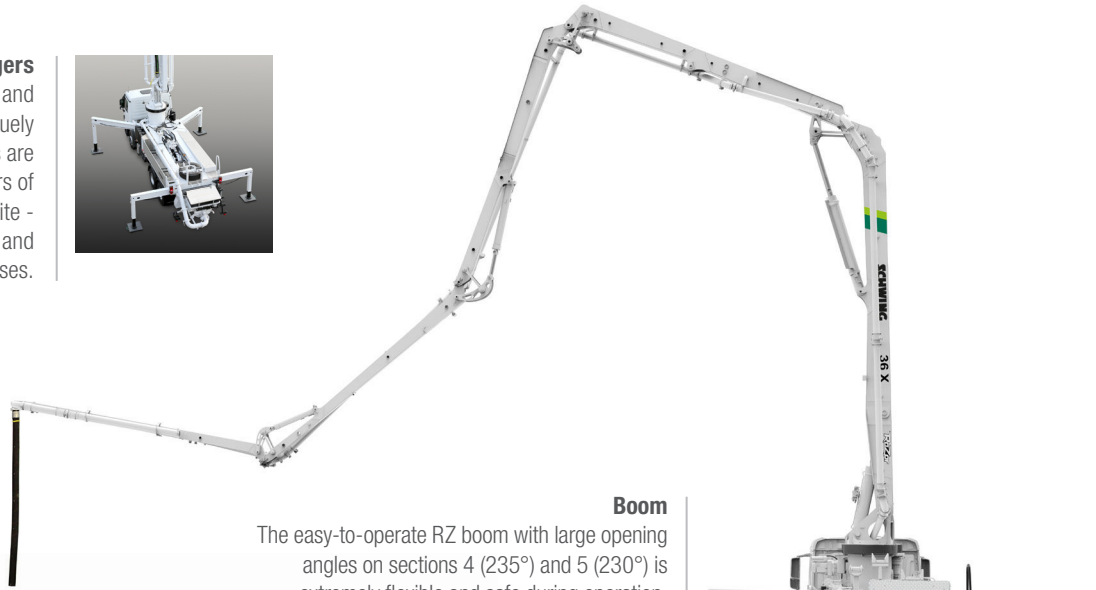
### SCC (SCHWING Cab Control)

The 5" SCC touch screen allows operators to safely switch between pumping and driving modes. The SCC displays PTO hours and PLC I/O Status. The operator can also adjust PTO related settings along with raising/lowering optional pusher axles. Backup camera is standard with optional blind spot cameras, DVR and 7" touch screen.



### Outriggers

The unique combination of front X and rear H outriggers results in a uniquely small footprint. The support legs are designed to withstand the rigours of daily use on the construction site - thanks to the enclosed piston rods and hydraulic hoses.



### Boom

The easy-to-operate RZ boom with large opening angles on sections 4 (235°) and 5 (230°) is extremely flexible and safe during operation. Another advantage is the low unfolding height of 22'- 4" and the large slewing range of 2 x 365°. To increase safety when pumping and minimize blockages, only standard elbows with a large 10" radius are used with the 5" boom pipeline.



### Remote control SC 30

The lightweight, easy-to-use and comfortable SC 30 helps minimize fatigue, allowing the operator to focus on the job for extended periods of time. The powerful rechargeable batteries provide at least 8 hours of operating time.



### Hydraulic system

The open-loop hydraulic system of the S 36 X RaZor converts the engine power efficiently into pumping power with little loss. Advantages: standard output rates can be achieved with a fuel-saving engine speed of 1550 rpm.



### Hinged sideboard

The S 36 X RaZor has a standard hinged sideboard on the driver side of the machine. The sideboard can be flipped down and features an integrated pipe rack that makes it easy to transport hoses, pipes, and other supplies.



### High resolution color display: VECTOR II Control

The VECTOR II control system allows the operator to call up machine data, operating status, and selected settings of the S 36 X RaZor. They can also change various machine parameters and settings. The integrated diagnostic system ensures safe operation and alerts the operator to maintenance intervals.

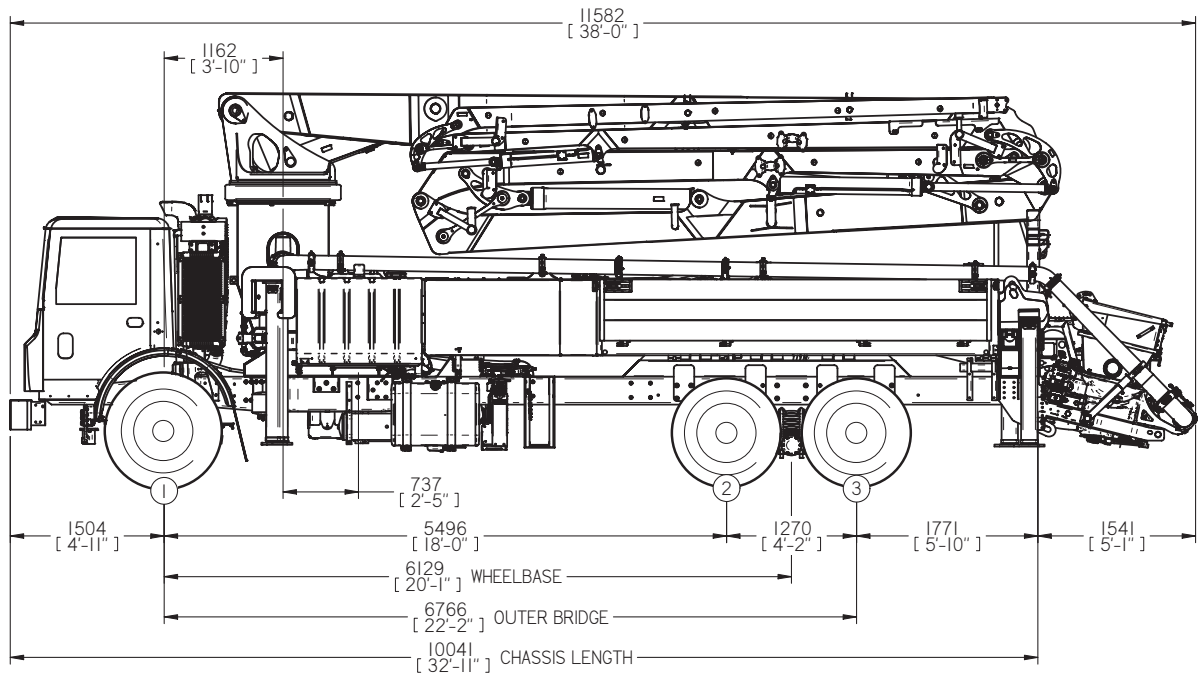


# Truck options

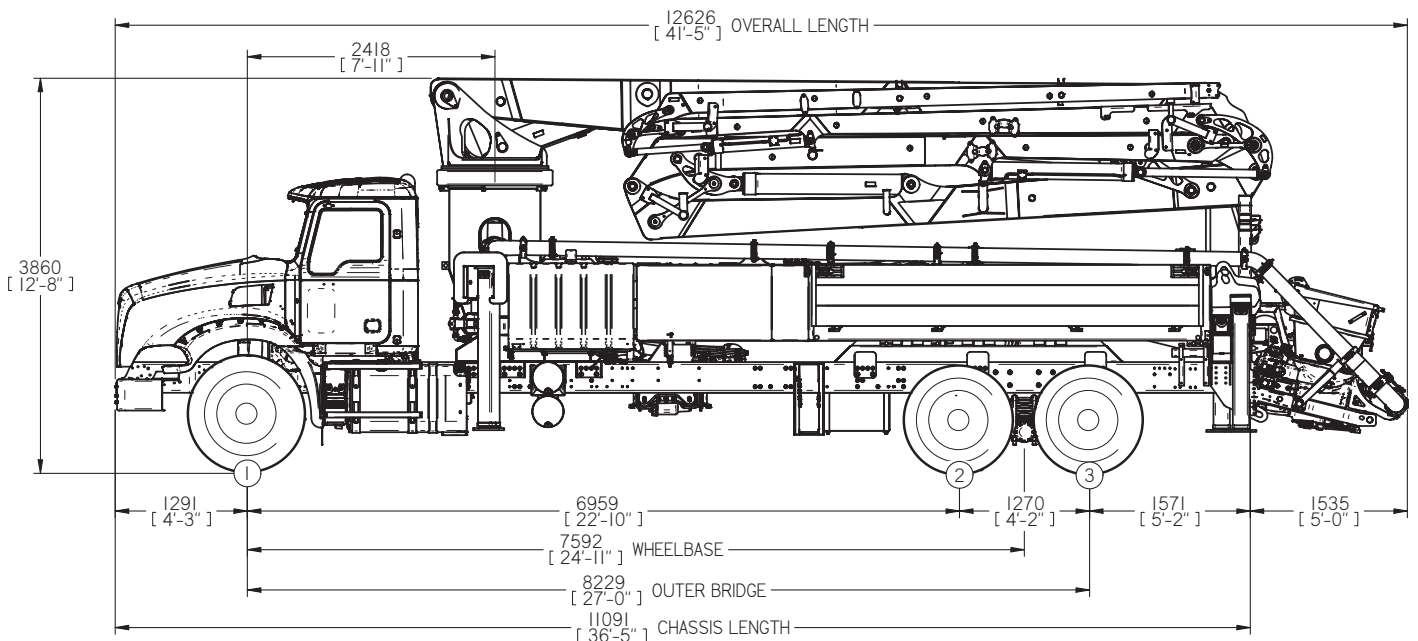
## More options to suite your needs.

SCHWING only supplies heavy duty truck chassis specifically designed for concrete pumps. Standard chassis are the Mack TerraPro and Granite 6x4. Chassis from other manufacturers are available upon request. Our Engineering department can work with you to supply the right chassis that meets local regulations and weight restrictions.

### Mack TerraPro Manual 6x4 Total Weight w/o water 56,220 lbs



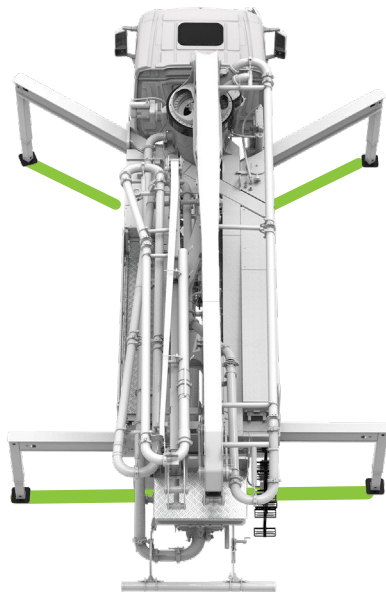
### Mack Granite Auto 6x4 Total Weight w/o water 56,080 lbs



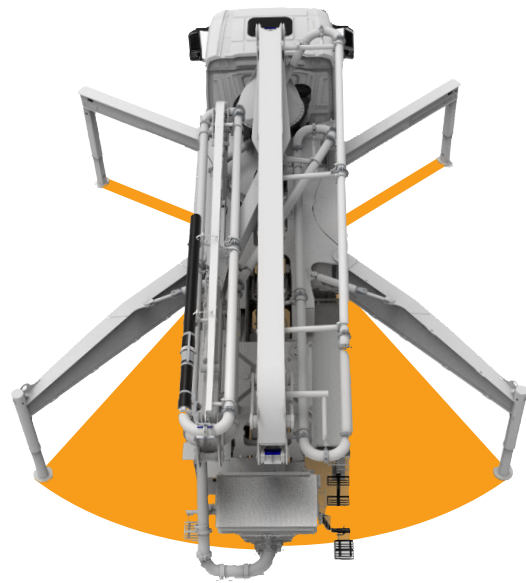
# Compact outrigger design

## Less set-up space, more flexibility.

Because of the unique combination of front X- and rear H-outriggers, the S 36 X RaZor needs the smallest set-up space in its class. Rear H-outriggers slide out to offer operators significant advantages over the more common swing-out rear outriggers, as they allow the S 36 X RaZor to be deployed to sites where other concrete pumps simply will not fit. In addition, the rear H-outriggers offer lots of storage space on both sides for accessories and hoses. The standard sideboard on the driver's side of the machine is hinged and features integrated hose/pipe mounts.

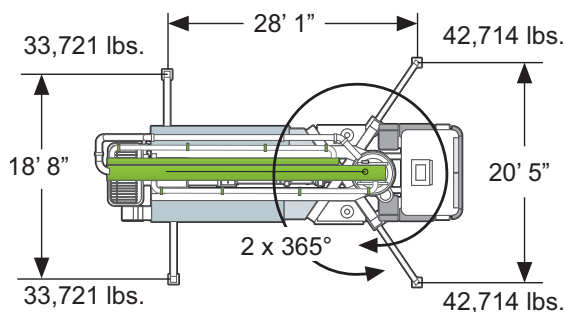


S 36 X RaZor with combined X and H outriggers

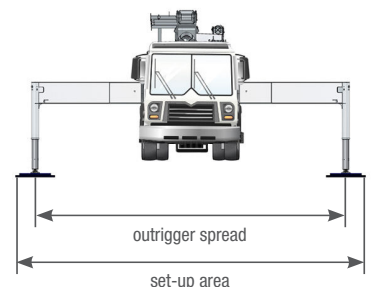


Concrete pump with combined X and folding outriggers

## Outrigger Spreads



Outrigger spreads measured from the center of the outrigger leg. Any cribbing or underlay timbers must be taken into account when determining the required set-up area.



# S 36 X RaZor Truck-mounted concrete pump

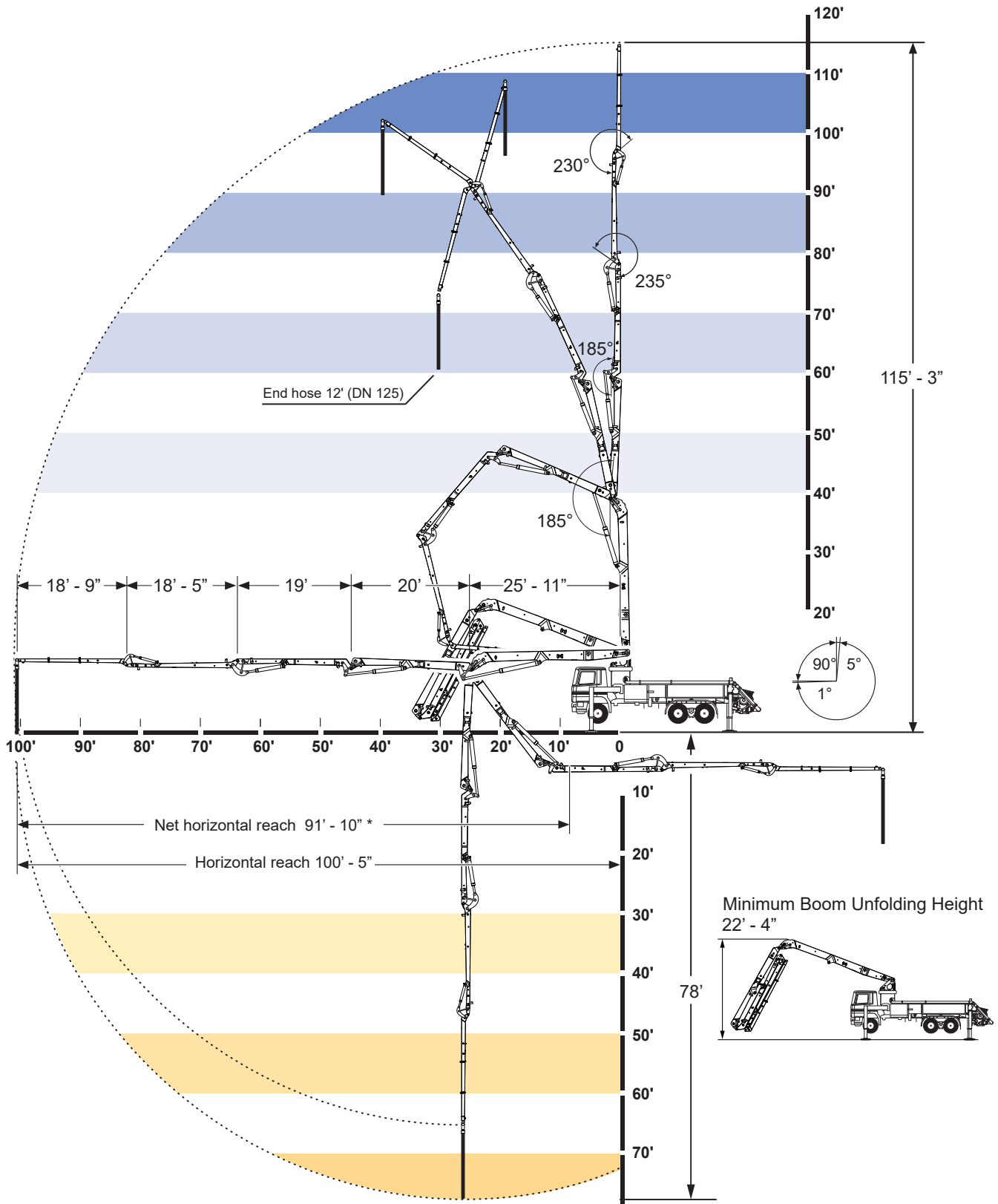
## Technical Data

Performance	U.S.	Metric
Pump kit	2025H-5 120/80	
Drive	141 gal/min	535 l/min
Delivery cylinders	10" x 79"	250 x 2,000 mm
Concrete output max.	178 cu. yds./h	136 m <sup>3</sup> /h
Pressure on concrete max.	1102 psi	76 bar
Stroke rate max.	24 1/min.	24 1/min.
Concrete valve	B-Rock	
Hydraulic system		
Design	open loop system	
Hydraulic tank	110 gal.	416 l
Boom	36 RZ	
Delivery line	5"	DN 125
Length of end hose	12'	3.5
Vertical reach	115' 3"	35.12 m
Reach depth	77' 11"	23.74 m
Gross horizontal reach	100' 5"	30.60 m
Net horizontal reach	91' 10"	28.0 m
Number of boom sections	5	
Height of the inflexion points	25' 11"/20'/19'/18' 5"/18' 5"	4.02 / 11.92 / 18.02 / 23.82 / 29.42
Slewing range	2 x 365°	
Folding height	22' 4"	6.8 m
Support		
Outrigger width, front	20' 5"	6.21m
Outrigger width, rear	18' 8"	5.70m
Outrigger load, front	42,714 lbs.	190 kN
Outrigger load, rear	33,721 lbs.	150 kN
Chassis (examples*)	Mack TerraPro	Mack Granite
Axles configuration	6 x 4	6 x 4
Wheelbase	20' 1"	24' 11"
Length	38'	41' - 5"
Operating weight	57,260	57,400
Miscellaneous		
Water Tank	110 gal	410 l

\*depending on the chassis \*\*other chassis possible

# S 36 X RaZor Truck-mounted concrete pump

## Working range



\* from front bumper

\*\* from centre of turret



Youtube



Facebook



schwing.com

# Razor



SCHWING the standard you set



# SCHWING

SCHWING America  
5900 Centerville Rd, St. Paul MN 55127  
Phone 651-429-0999  
www.schwing.com

SCHWING GmbH  
Heerstrasse 9-27 · 44653 Herne, Germany  
Phone +49 23 25 - 987-0 · Fax +49 23 25 - 72922  
www.schwing-stetter.com · info@schwing.de