

S 47 SX III

TRUCK-MOUNTED CONCRETE PUMP

WITH 5-SECTION HYPER EXTENSION
ROLL & FOLD PLACING BOOM



SCHWING®

S 47 SX III

CONTINUED INNOVATION

One of the most versatile concrete pumps is now even more productive with an all new 5-Section Hyper Extension Roll & Fold® Boom. The new S 47 SX III is the ideal boom for overall pumping and placing efficiency. Operators will appreciate the extra articulation at every boom section, including a 215 degree tip section. With a slewing range of 730 degrees and multiple EASy one-sided outrigger configurations, the boom adapts to most job sites and features 151' 3" of vertical reach.

OUTPUT. VERSATILITY. MANEUVERABILITY. SCHWING.



STANDARD FEATURES

Boom

Schwing's 5-section Hyper Extension Roll and Fold® boom features extra articulation at every boom section including 215 degrees at the tip. Exceptional maneuverability and versatility comes with a compact travel position and low 32' 2" unfolding height. The generous 730 degree slewing range means the operator finishes faster for more jobs in a day.



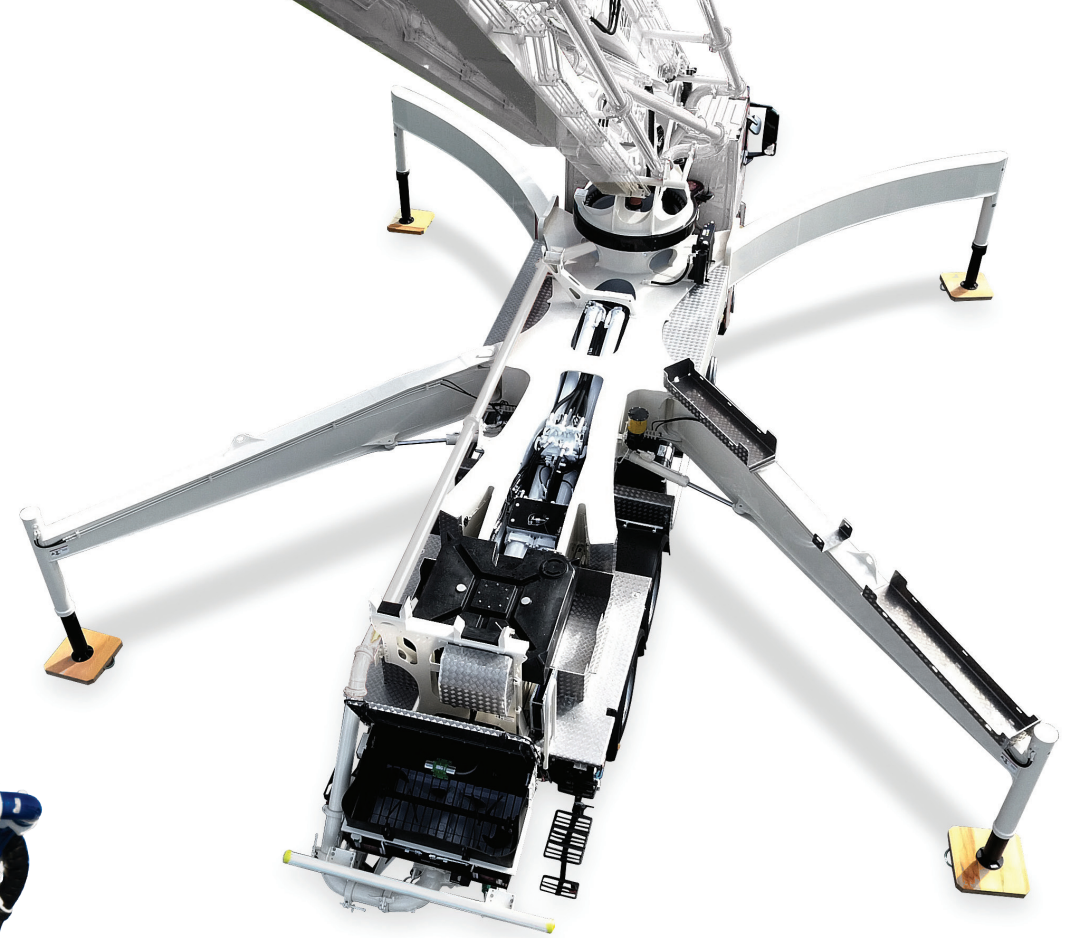
Pump Kit

Continuous refinement makes the Schwing pump smooth, reliable and low maintenance, delivering maximum volume with minimal strokes.



SX Outriggers

Exclusive design provides maximum stability with a smaller footprint on tight job sites. The curved front outriggers telescope out and around obstacles, allowing placement of the pump as close to the pour area as possible.



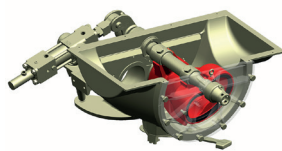
Open Loop Hydraulic System

The S 47 SX III converts the engine power efficiently into pump power for fuel savings. Faster hydraulic switching means smoother pumping.



Rock Valve™

Nothing combines low cost-per-yard, low maintenance costs, and the ease of rebuilding like the Rock Valve™. As the most accessible valve in the industry, it is an operator's friend, shortening clean-up time while using less water. Ease of servicing and fewer replacement parts increases pump availability for higher return on your investment.



Convenient Control

Centralized control of the water box, water pump, agitator, spray hose and high pressure cleaner is an operator-friendly feature that translates to efficiency and profitability.



VECTOR Remote

The VECTOR remote system provides proportional radio remote control of the boom functions and communicates with the operator to stay fully informed of pump status. It also monitors the boom position in EASy Flex mode to ensure the safety of the pump and operator.



VECTOR Control

The operator can inspect machine data, operating conditions and settings on the S 47 SX III, through the VECTOR control panel. The integrated diagnostic system ensures safe operation and also reminds the operator when maintenance is necessary.

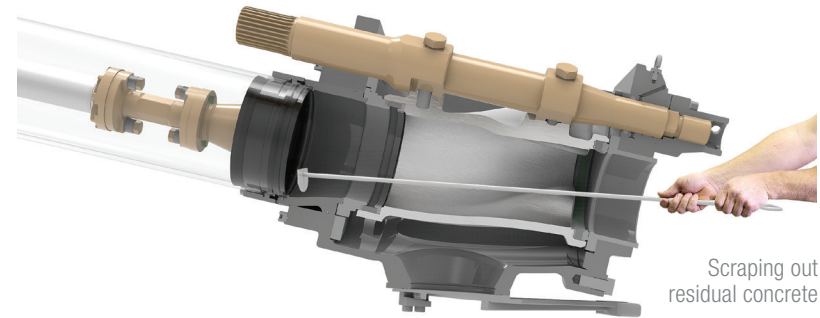


ADVANTAGES & BENEFITS

THE ROCK VALVE™. EXTREMELY ROBUST.

Faster cleanup with less water.

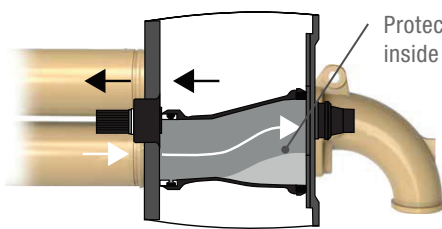
The Big Rock Valve™ features an extended housing to easily keep up with the requirements of high volume pours even with the harshest mixes. Carbide wear parts extend maintenance intervals.



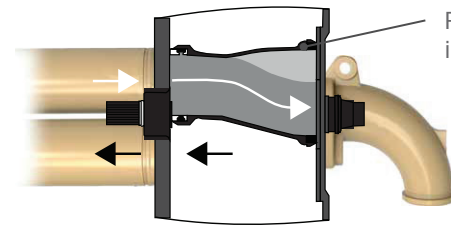
Scraping out residual concrete

LOWEST COST PER YARD

No other sequencing valve combines lowest cost-per-yard maintenance with the ease of rebuilding like the Rock Valve™. As the most accessible valve in the industry, the Rock Valve™ shortens cleanup time while using less water. It has fewer replacement parts which increases pump availability for a higher return on your investment. With over thirty years of development and field-tested toughness, the Rock Valve™ remains the most effective concrete valve available.



Protection of the Rock inside by concrete triangle

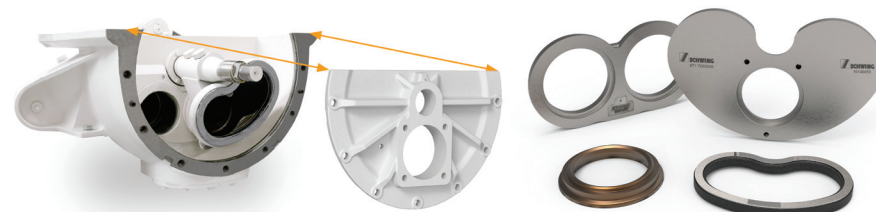


Protection of the Rock inside by concrete triangle

EASY MAINTENANCE

Maintenance of the Rock Valve™ is simple, fast and safe!

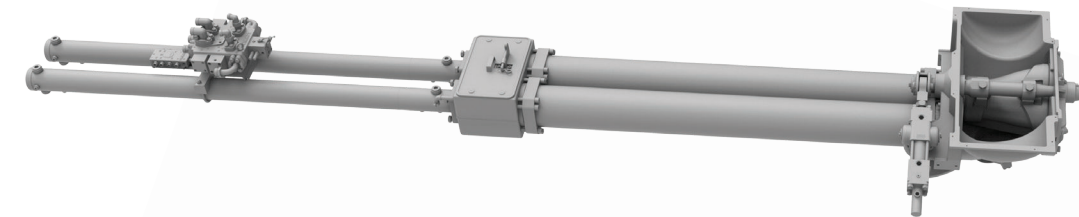
The Rock Valve™ not only has a much longer life than other concrete valves, it is also easier to maintain. After removing the housing cover, the wear parts are easily accessible and can quickly and safely be replaced. Time-consuming adjustments are not required after replacement. The Rock Valve™ contains only 15 wear parts – half the amount of competitors' concrete valves.



THE LONG-STROKE PUMP KIT 2525H-6

Less wear, more profit.

The Super X Outriggers make room for long material cylinders in the S 47 SX III, resulting in 15% fewer pump strokes to achieve maximum output. This also contributes to improved wear, longer life and continuous pumping profits with less maintenance and more uptime.



P2525 with 98" long delivery cylinders

THE 47 METER BOOM

More rotation allows set-up in any position to reach the pour area.

Utilize the full 730 degree rotation of the turret (365 degrees in either direction) for more flexibility when positioning the pump.



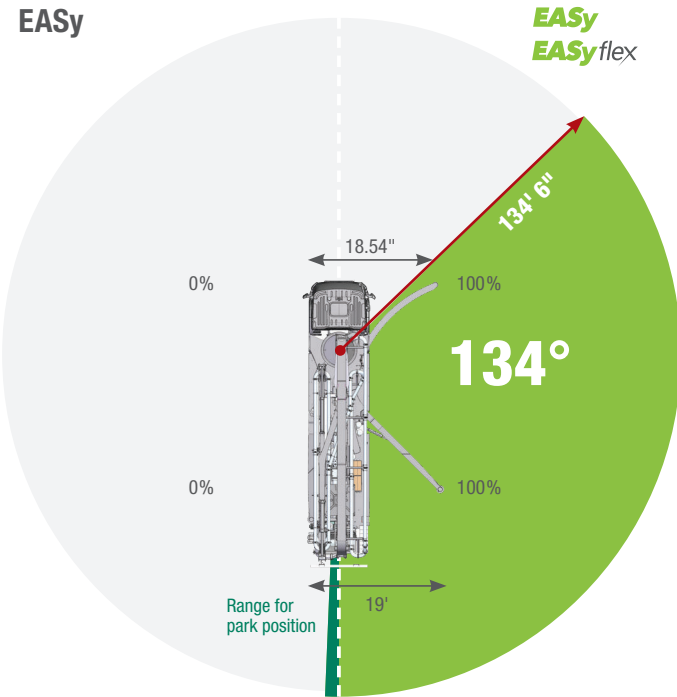
2 x 365°

EASy & EASy FLEX

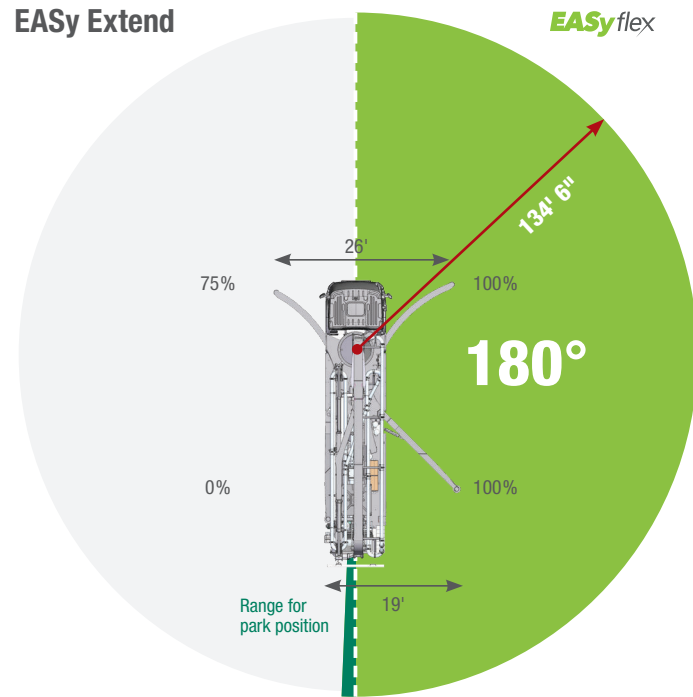
EASy
EASyflex

The one-sided outrigger systems EASy and EASy Flex extend the range of applications. With EASy, the concrete pump can be supported on one side and cover a working range of 134 degrees. EASy Flex provides further outrigger combinations for more flexibility on the jobsite. All one-sided outrigger configurations are monitored by the VECTOR Control system to assure the safety of the pump and operator.

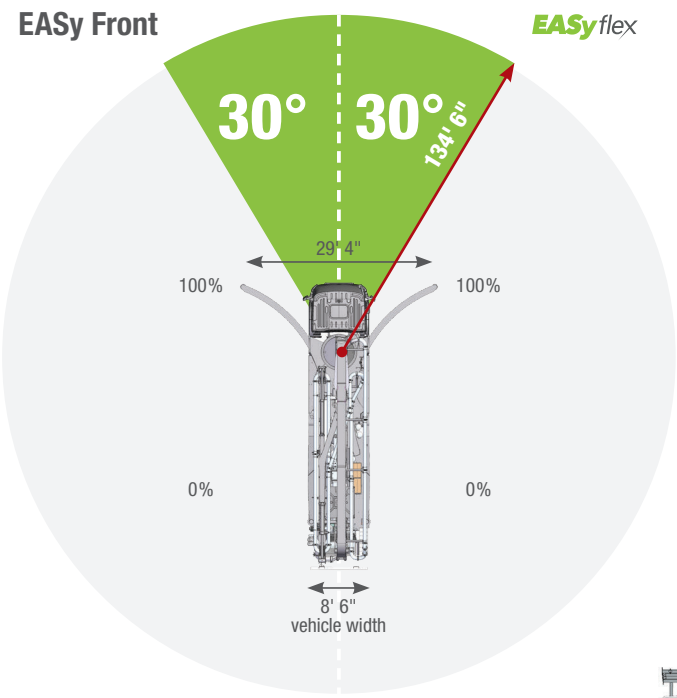
EASy



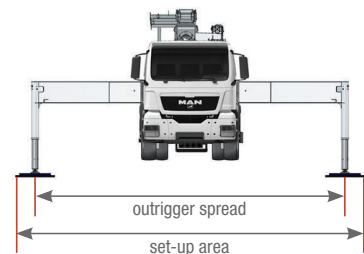
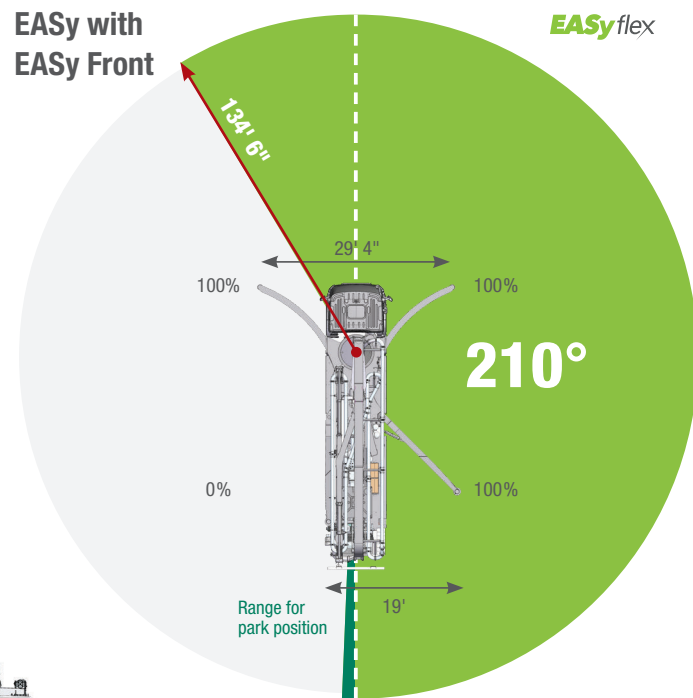
EASy Extend



EASy Front

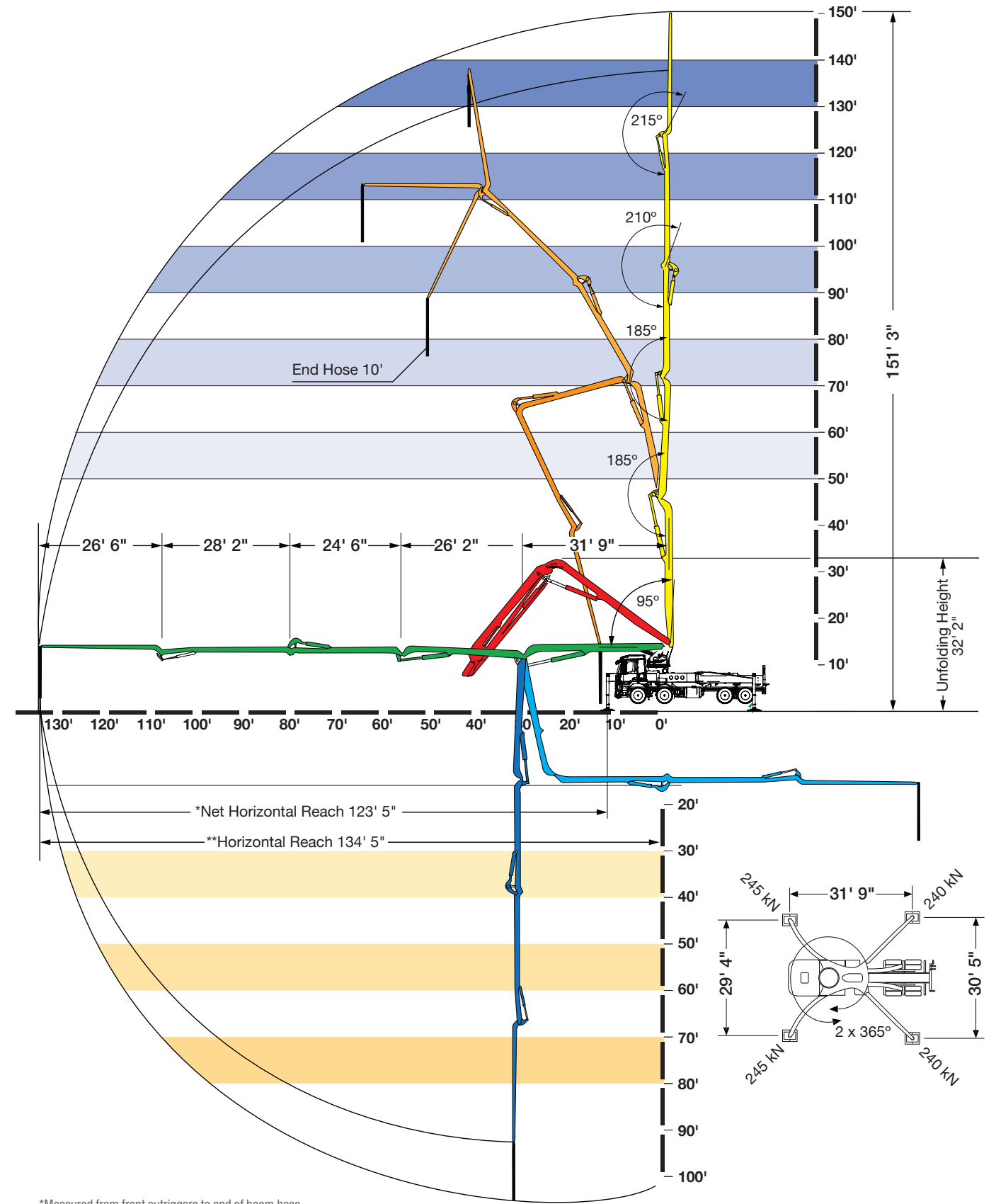


EASy with EASy Front



The outrigger spreads as specified are measured from the center of the outrigger leg. Any cribbing or underlay timbers must be taken into account when determining the required set-up area.

WORKING RANGE



*Measured from front outriggers to end of boom hose
**Measured from center of turret to end of boom hose

SPECIFICATIONS

S 47 SX III

Pump Kits	2525H-6 120/85 MPS	
	U.S.	Metric
Theor. Concrete Output Per Hour (cubic yards - cubic meters)	213	162
Maximum Pressure on Concrete (psi - bar)	1169	81
Maximum Strokes Per Minute	22	
Maximum Aggregate Size (in. - mm)	2.5	63.5
Material Cylinder Diameter (in. - mm)	10	254
Material Cylinder Stroke Length (in. - mm)	98	2500
Differential Cylinder Size (in. - mm)	4.7	120
Maximum Oil Flow (gal/min - l/min)	158.5	600
Hydraulic Circuitry Type	MPS	
Valve Type	B Rock	

Boom Specifications

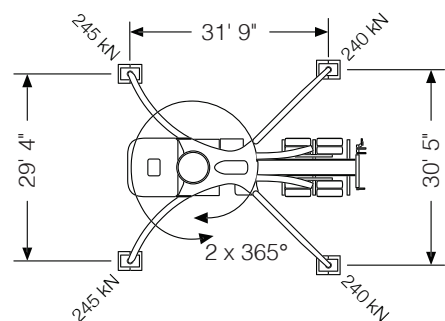
Vertical Reach (ft.-in. - m)	151-3	46.1
Horizontal Reach (ft.-in. - m)	134-5	41
Net Horizontal Reach (ft.-in. - m)	123-5	37.6
Below Grade Reach with Tip Hose (ft. - m)	106-4	32.4
Pipeline Diameter (in. - mm)	5	125
Boom Type	5-Section Hyper Extension— Roll & Fold®	
Slewing Range	730°	
Unfolding Height (ft.-in. - m)	32-2	9.8
End Hose Length (ft. - m)	10	3.0

Section Lengths

First Section (ft.-in. - m)	31-9	9.7
Second Section (ft.-in. - m)	26-2	8.2
Third Section (ft.-in. - m)	24-6	7.4
Fourth Section (ft.-in. - m)	28-2	8.5
Fifth Section (ft.-in. - m)	26-6	8

Outriggers

Design (front)	Super X, Hydraulic Slewing & Jacking	
Design (rear)	Hydraulic Slewing & Jacking	
Front Width (ft.-in. - m)	29-4	8.9
Rear Width (ft.-in. - m)	30-5	9.3
Length (ft.-in. - m)	31-9	9.6
Soil Pressure with Dunnage (front/rear)	98/96 psi	6.8/6.6 bar
Soil Pressure without Dunnage (front/rear)	696/769 psi	48/53 bar





5900 Centerville Road | St. Paul, MN 55127
1-888-SCHWING | FAX 651-429-3464 | www.schwing.com